



Early Head Start Annual Report for FY 2020-2021

Each year Momentum PTN's licensed and credentialed staff provides intervention and support to more than 2,500 infants, youth, and families. Child development and therapy programs are available at our child-friendly center in Torrance and homes, schools, and other community sites. In addition, Momentum PTN's professional staff develops educational programs and products and is involved in local, national, and international research. Collaboration with families is a cornerstone for all Momentum PTN programs and activities. Everyday life becomes easier when children's needs are fully understood and their parents and caregivers learn practical ways to help them. Our family-centered services include:

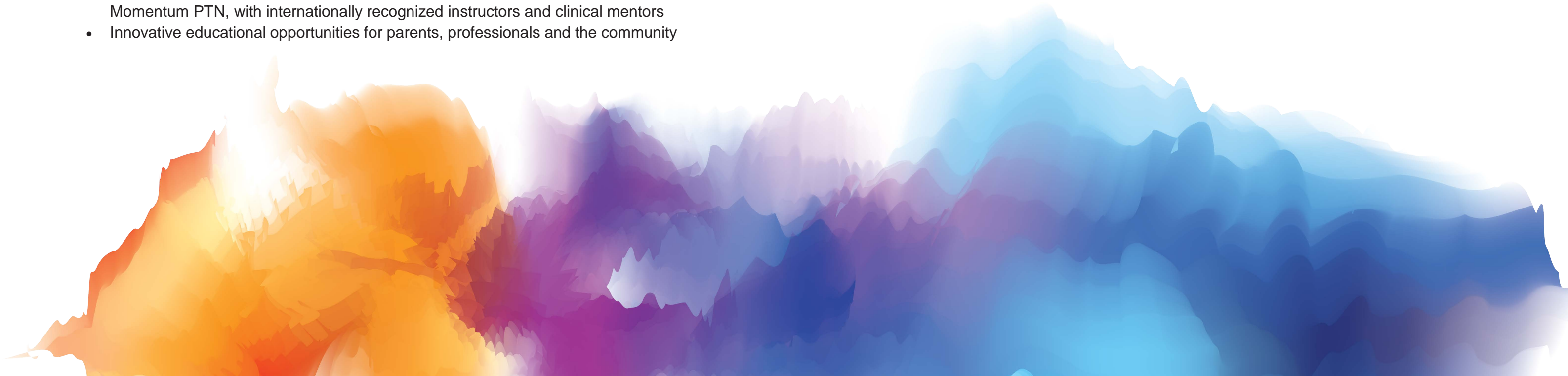
- Occupational, Physical and Speech/Language Therapy
- Early Head Start-for pregnant women, infants, toddlers and families
- Leaps & Bounds –therapeutic early intervention and toddler enrichment
- Buddy Club-social skills and community integration training for children and families
- My Place – Social skills and community integration training for adolescents and families
- Camp Escapades-a summer day camp for children of all abilities

Momentum PTN is internationally recognized as a center of excellence in Ayres Sensory Integration. Therapists have advanced degrees and are recognized experts in the following areas:

- Communication Skills
- Coordination/Balance
- Handwriting
- Home/Environmental Adaptations
- Language skills
- Motor Skills
- Oral Motor/Feeding Abilities
- Organizational Skills
- Self-Care Abilities
- Social/Play Skills
- Speech/Articulation Skills
- Strength/Fitness

Momentum PTN reaches families and communities through internationally renowned research, educational products and evidence-based programs, including:

- Collaboration with the University of Southern California's Division of Occupational Science and Occupational Therapy to offer advanced training in sensory integration (OT 610/SI 610), held at Momentum PTN, with internationally recognized instructors and clinical mentors
- Innovative educational opportunities for parents, professionals and the community



Enrollment

The total number of children and families served, the average monthly enrollment, (as a percentage of funded enrollment), and the percentage of eligible children served.

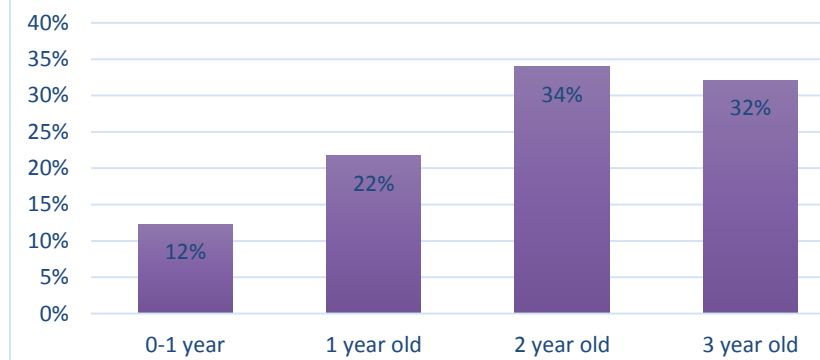
TOTAL Number of Families Served FY 2020-2021: 124



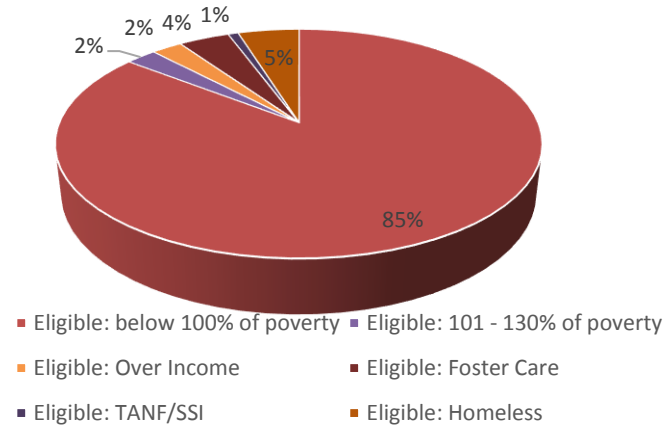
2020-2021 Program Year: Early Head Start

- The total numbers of families served:124
- Total number of children served:106
- Total number of pregnant women served:18

Enrollment by Age Category



Enrollment by Income Category



School Readiness

The Agency’s efforts to prepare children for pre-school and kindergarten.

Momentum's PTN Early Head Start has utilized the Creative Curriculum® since 2010, as it compliments and supports the education philosophy and mission of our agency. Creative Curriculum® focuses on planning activities as well as assessing children at three checkpoints, the end of Fall, Winter, and Spring. The growth of each child is assessed and recorded, then all results are compiled for further analysis. These results are used to address classroom environment, lesson planning and professional growth opportunities for staff. This may result in programmatic changes, in service training and equipment purchases when necessary. Momentum's PTN-Early Head Start relies on data to make informed decisions on any programming changes.

Momentum PTN’s EHS School Readiness Goals were developed to align with the *Head Start Child Development and Early Learning Framework* and the *California State Infant/Toddler Learning & Development Foundations*. Table 1 illustrates Momentum PTN’s EHS School Readiness Goals for program years 2020-21; data represents October 2021 data point.



Early Head Start

Table 1: PTN EHS School Readiness Goals for 2020-2021			
Domain	Established School Readiness Goals	TSG Item	Fall 2021 Progress (% of children)
Approaches to Learning	At each reporting period, 80% of children enrolled at least 90 days in the program will demonstrate positive approaches to learning by showing persistency when repeating actions many times until they become successful.	11b	Met/Exceeds: 96% Not Met: 4%
Social Emotional	At each reporting period, 80% of children enrolled at least 90 days in the program will establish and sustain positive relationships by responding to emotional cues.	2b	Met/Exceeds: 95% Not Met: 5%
Language	At each reporting period, 80% of children enrolled at least 90 days in the program will use appropriate conversational and communication skills by using social rules of language.	10b	Met/Exceeds: 85% Not Met: 15%
Cognition	At each reporting period, 80% of children enrolled at least 90 days in the program will use symbols and images to represent something not present by thinking symbolically.	14a	Met/Exceeds: 94% Not Met: 6%
Physical	At each reporting period, 80% of children enrolled at least 90 days in the program will demonstrate gross motor manipulative skills.	6	Met/Exceeds: 94% Not Met: 6%



Family Engagement

Information about parent involvement activities.

Early Head Start continues to focus on the importance of family engagement. From the very first meeting with the family, parents have the opportunity to be involved in their child's Early Head Start experience. In addition, parents provide information during the enrollment process about any pressing needs.

Educators offer home visits and parent/teacher conferences throughout the year to support ongoing communication regarding their child's growth and development. The initial Family Needs Assessment is conducted with the family within 45 days to develop family partnership goals.

Parent involvement, program oversight, and development opportunities continue through Parent Committees, Policy Council, and self-assessment.

Parents are encouraged to assume an active role in leading meetings and providing input regarding program operation throughout the year. This engagement is done through surveys, creating meeting agendas, face-to-face communication, and attendance at National conferences.

Workshops, Training, and Resource opportunities designed to meet the needs/interests identified by parents and required training components are available throughout the program year. Events include; Daddy and Me, Car Seat training, Financial Literacy, Parent Social Support Groups, Prenatal Support Groups, Frosty Fiesta, and many other opportunities for family engagement.

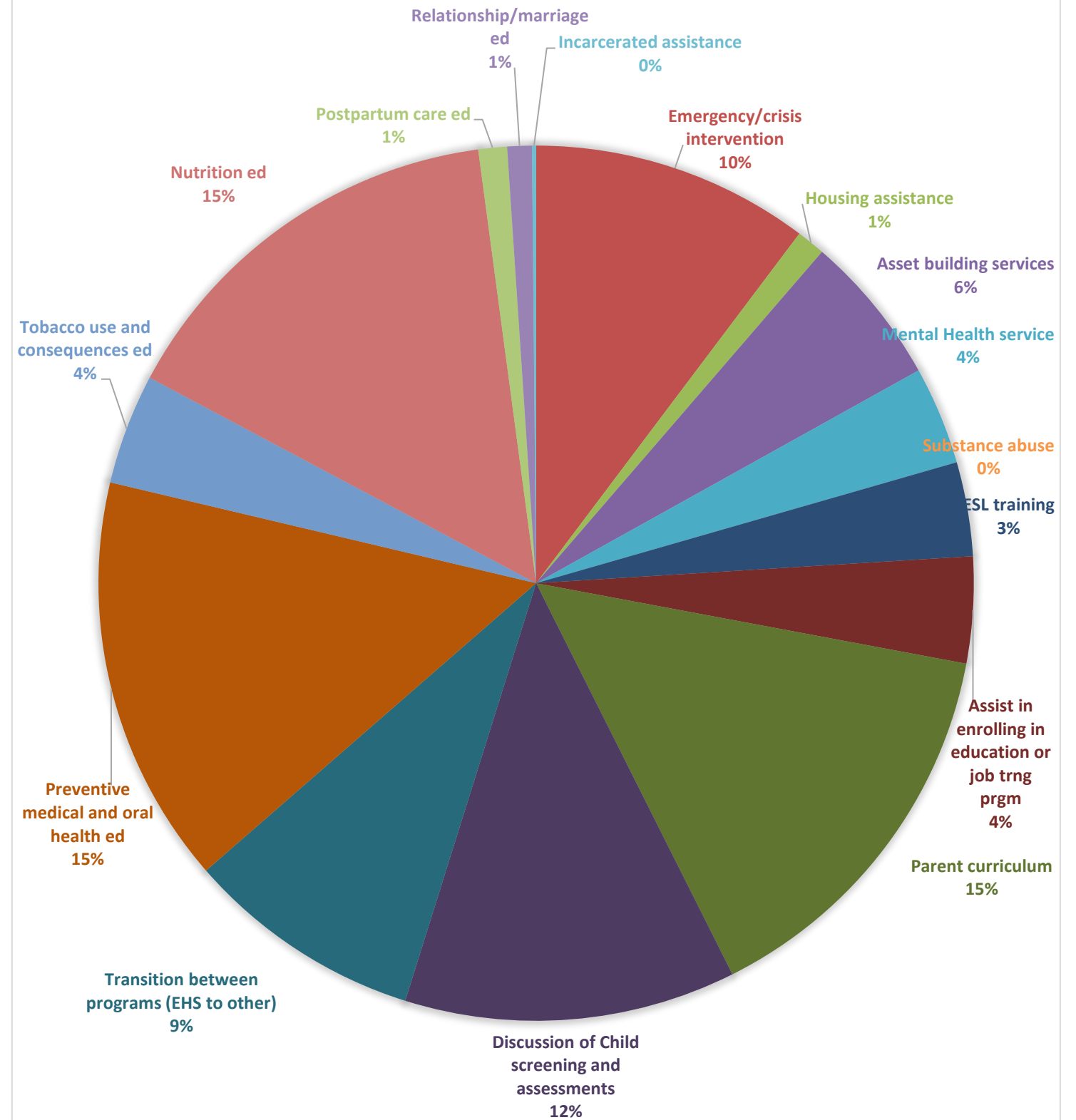
In addition, the Early Intervention Program offers:

Parent Social Hour - Parents gather to meet and greet with other Leaps and Bounds families. They support one another and share concerns and strategies to cope with their child's developmental delay(s).

Parent orientation sessions - Parents come to learn more about the various aspects of our early intervention program (i.e. Respite Rendezvous, Spin Zone Jr., Lending Library, etc.). There is an opportunity to discuss collaboration with a team perspective to address their children's therapeutic needs and help enhance overall development.

Parent Education Lectures - ABC of the IEP, My Child and Sensory Integration, Nutrition for Your Child, Gross Motor Skills, Improving Speech and Language. These education lectures provide parents with information that is relevant to their child's situation and family.

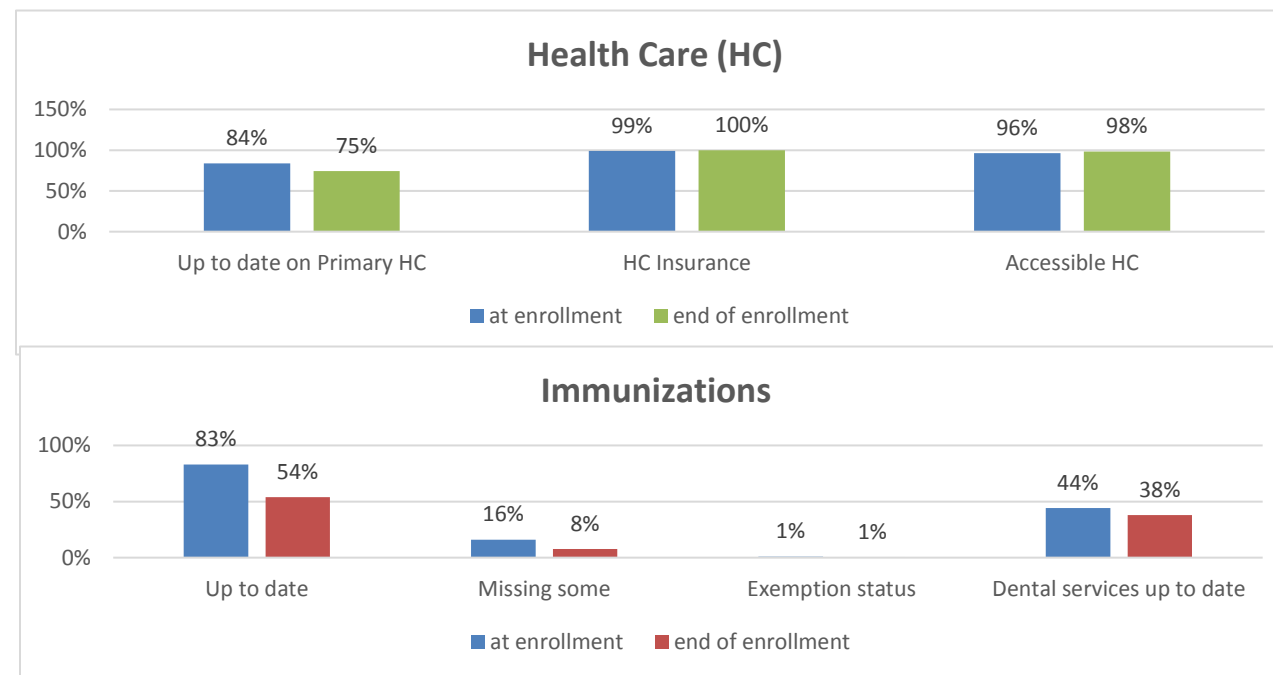
RECEIPT OF FAMILY SERVICES



Health

Percentage of Enrolled Children that Received Medical and Dental Exams

- In Early Head Start program, 98% of enrolled children received Medical exams
- In Early Head Start program, 63% of enrolled children received Dental exams



Early Intervention Services

Number of enrolled children who were determined eligible to receive early intervention services: 26%

Of these, the number determined eligible to receive services prior to enrollment: 7%

Of these, the number determined eligible to receive services during enrollment:

Pregnant Women

Pregnant women who received medical services while enrolled by category:

Medical Services - Pregnant women

Prenatal health care	94%
Postpartum health care	83%
Oral Health assessment	6%
Mental Health interventions	17%
Fetal development education	89%
Breastfeeding education	83%
Nutrition education	94%
Infant care and safe sleep education	83%
Alcohol, drugs, smoking education	83%
Substance abuse treatment access	0%

